

R-C Thermal Model Parameters

DESCRIPTION

The parametric values in the R-C thermal model have been derived using curve-fitting techniques. R-C values for the electrical circuit in the Foster/tank and Cauer/filter configurations are included. When implemented in P-SPICE, these values have matching characteristic curves to the single-pulse transient thermal impedance curves for the MOSFET.

These RC values can be used in the P-SPICE simulation to evaluate the thermal behavior of the MOSFET junction temperature under a defined power profile. These techniques are described in application note AN609, "Thermal Simulation of Power MOSFETs on the P-SPICE Platform".

R-C THERMAL MODEL FOR TANK CONFIGURATION



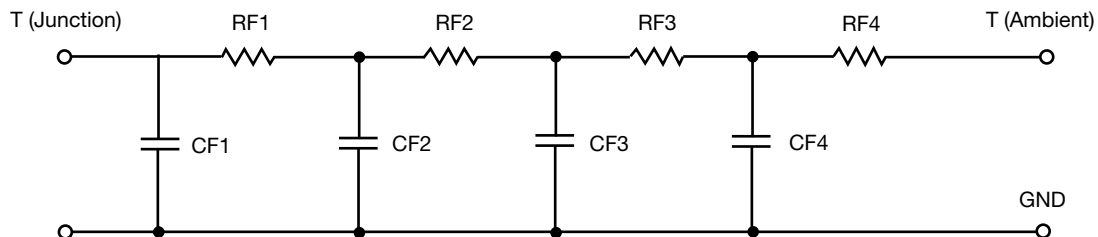
R-C VALUES FOR TANK CONFIGURATION			
THERMAL RESISTANCE (°C/W)			
Junction to	Ambient	Case	Foot
RT1	N/A	579.3756 m	N/A
RT2	N/A	379.2909 m	N/A
RT3	N/A	1.4104	N/A
RT4	N/A	117.8335 m	N/A
THERMAL CAPACITANCE (Joules/°C)			
Junction to	Ambient	Case	Foot
CT1	N/A	253.0539 m	N/A
CT2	N/A	5.9040 m	N/A
CT3	N/A	20.3379 m	N/A
CT4	N/A	846.6469 u	N/A

Note

N/A indicates not applicable

This document is intended as a SPICE modeling guideline and does not constitute a commercial product datasheet. Designers should refer to the appropriate datasheet of the same number for guaranteed specification limits.

R-C THERMAL MODEL FOR FILTER CONFIGURATION



R-C VALUES FOR FILTER CONFIGURATION			
THERMAL RESISTANCE (°C/W)			
Junction to	Ambient	Case	Foot
RF1	N/A	205.0585 m	N/A
RF2	N/A	741.9369 m	N/A
RF3	N/A	1.2727	N/A
RF4	N/A	280.3046 m	N/A
THERMAL CAPACITANCE (Joules/°C)			
Junction to	Ambient	Case	Foot
CF1	N/A	863.2831 u	N/A
CF2	N/A	5.2464 m	N/A
CF3	N/A	21.5529 m	N/A
CF4	N/A	607.6041 m	N/A

Note

N/A indicates not applicable

